

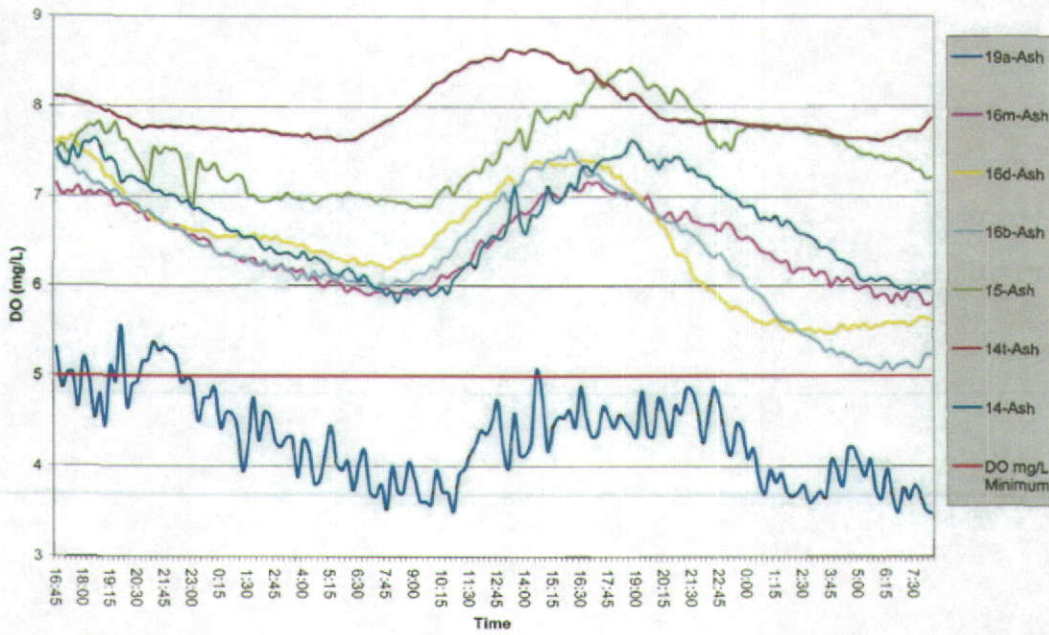
Exhibit B

Dissolved Oxygen Plots from the TMDL Data Report

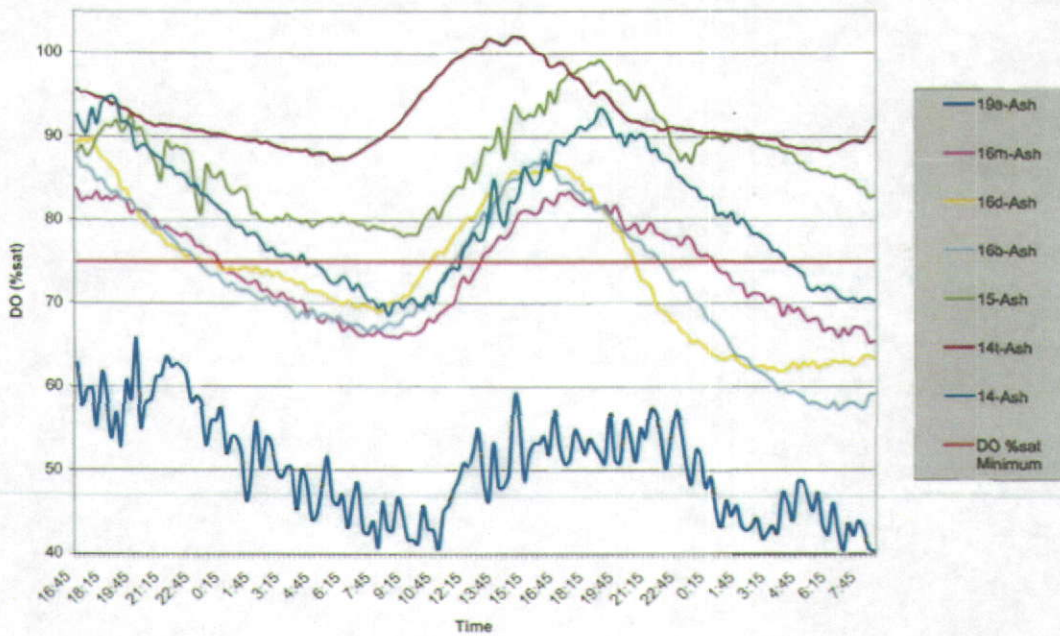
The following are plots of dissolved oxygen concentration and percent saturation excerpted from the State of New Hampshire's TMDL Data Report, which were included in the City's comments on the draft permit.

These plots depict the oxygen concentration and percent saturation at various stations along the River. All stations are below the Keene discharge, except station 19a-ASH, which is approximately 4.1 miles above the Keene discharge.

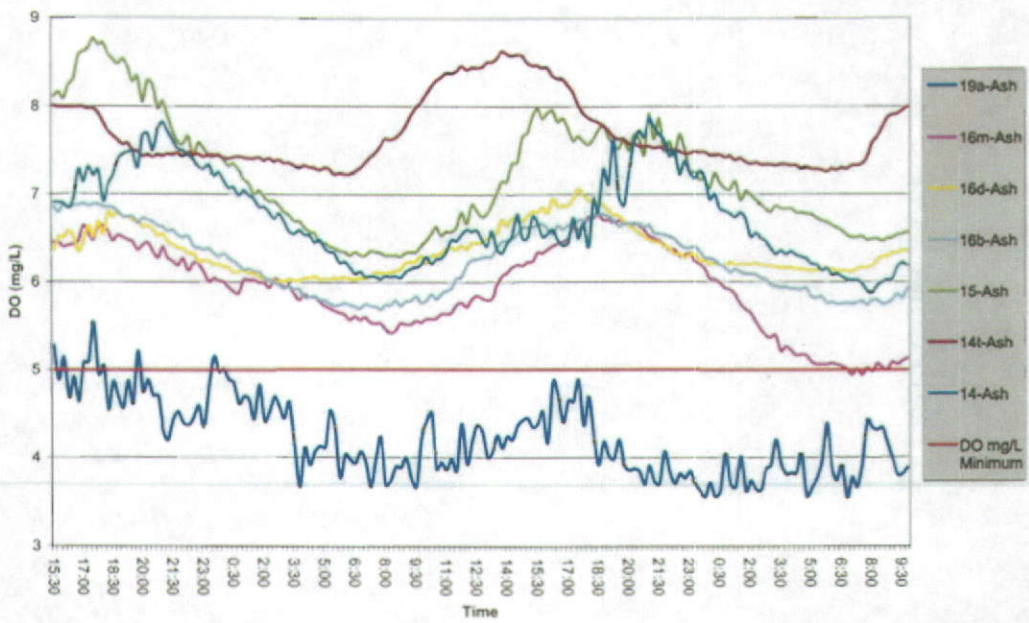
DO (mg/L) for Ashuelot River from August 15 to August 17, 2001



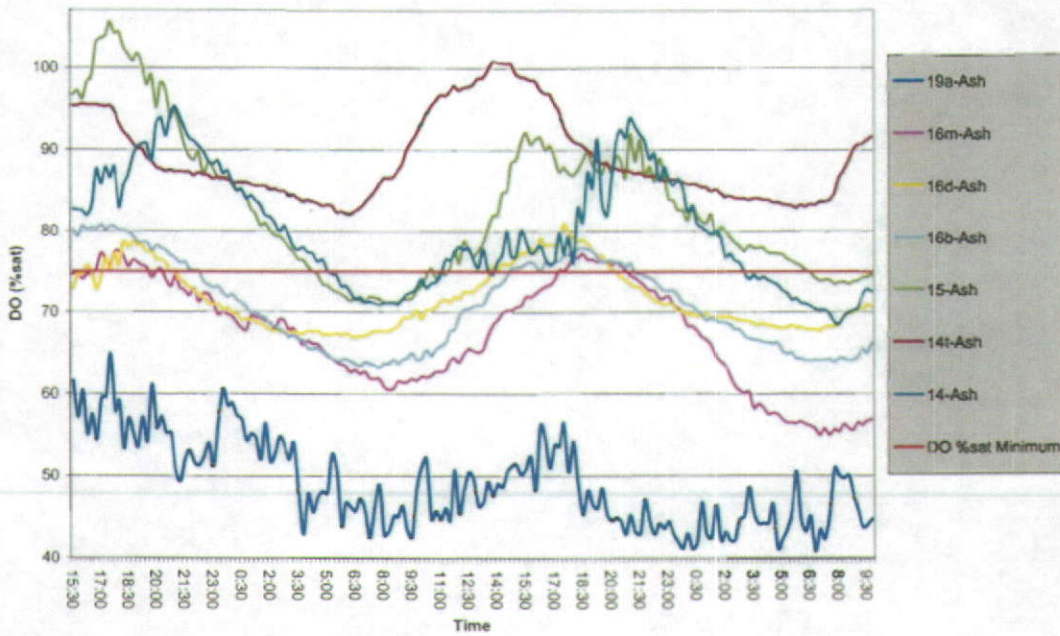
DO (%sat) for Ashuelot River from August 15 to August 17, 2001



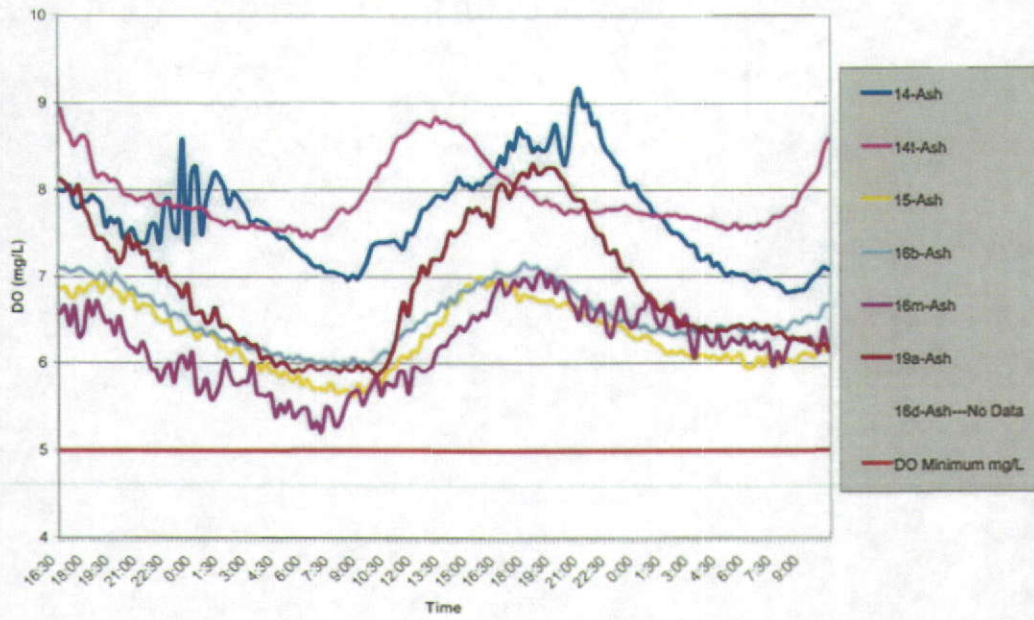
DO (mg/L) for Ashuelot River from August 22 to August 24, 2001



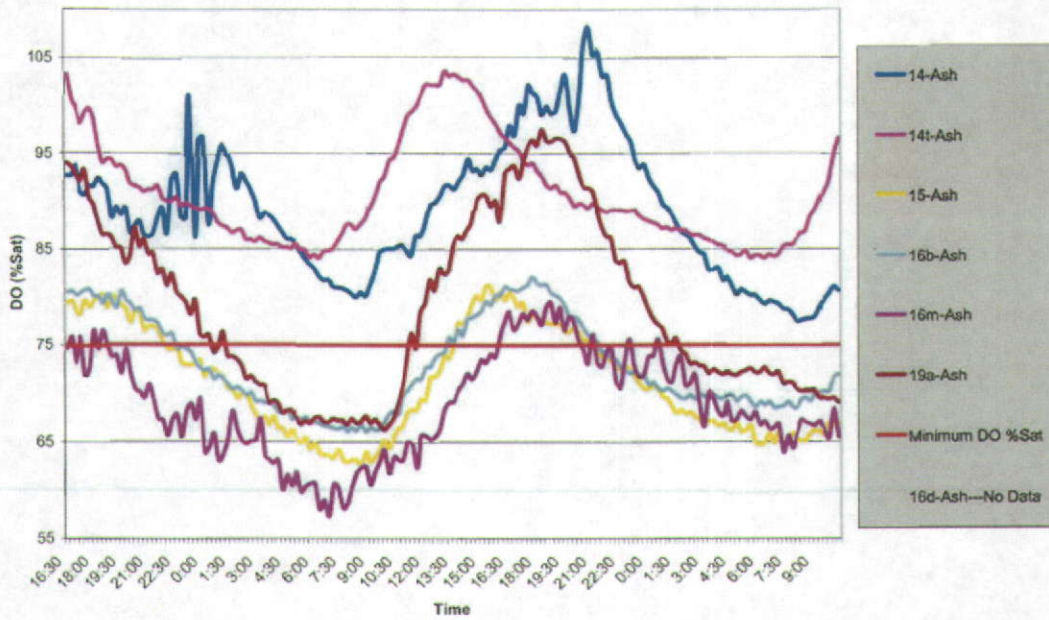
DO (%sat) for Ashuelot River from August 22 to August 24, 2001



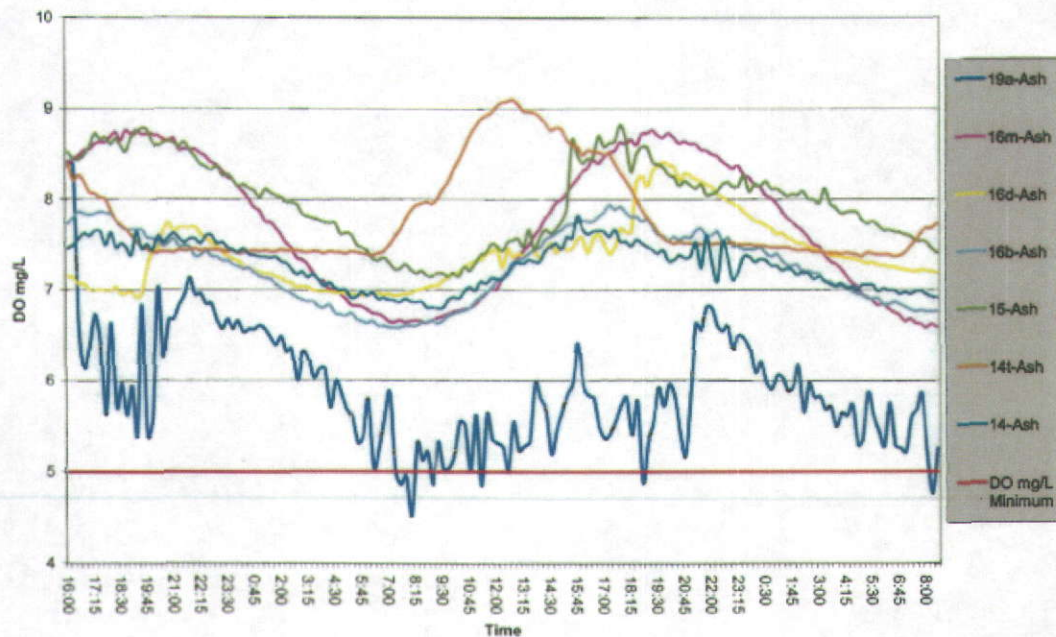
DO Mg/L for Ashuelot River from August 28 to August 30, 2001



DO % Sat for Ashuelot River from August 28 to August 30, 2001



DO mg/L for Ashuelot River, from August 27 to August 29



DO % Saturation for Ashuelot River, from August 27 to August 29

